

www.marineterrace.co.uk



Developer:
CHARTLAND
 The Drifthouse Studio, Forton Barns, Montford Bridge,
 Shrewsbury, SY4 1ET

tel. 01743 851261
enquiries@chartland.co.uk

IMPORTANT NOTICE
 1. The particulars are set out as a general outline only for the guidance of the intended purchasers or lessees and do not constitute, nor constitute part of, an offer or contract.
 2. All descriptions, reference to condition and necessary permissions for use and occupation and other details are given in good faith and are believed to be correct but any intending purchasers or lessees should not rely on them as statements or representation of fact but satisfy themselves by inspection or otherwise as to the correctness of each of them.
 3. No person in the employment of Chartland has any authority to make or give any representation or warranty whatsoever in relation to this property.
 4. All rentals and prices are quoted exclusive of Stamp Duty, legal and surveyors fees and any other associated purchasers or lessees costs.
 5. Floor plans are indicative only and should not be relied on.
 6. All dimensions, floor areas and site areas are only approximate and should not be relied on.
 7. Dimensions are generally maximum room dimensions.
 8. The developer reserves the right to change the layout, specification or price of any of the apartments.

Sea Breeze Apartments

A fabulous collection of seafront one bedroom apartments boasting stylish, contemporary interiors whilst retaining Victorian features occupying a prominent position on the famous promenade

from £125,000

FLOOR PLANS

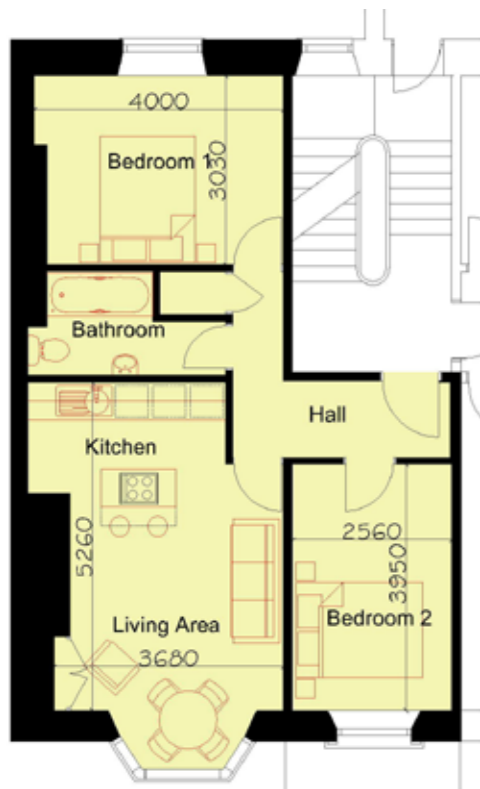
SPECIFICATIONS



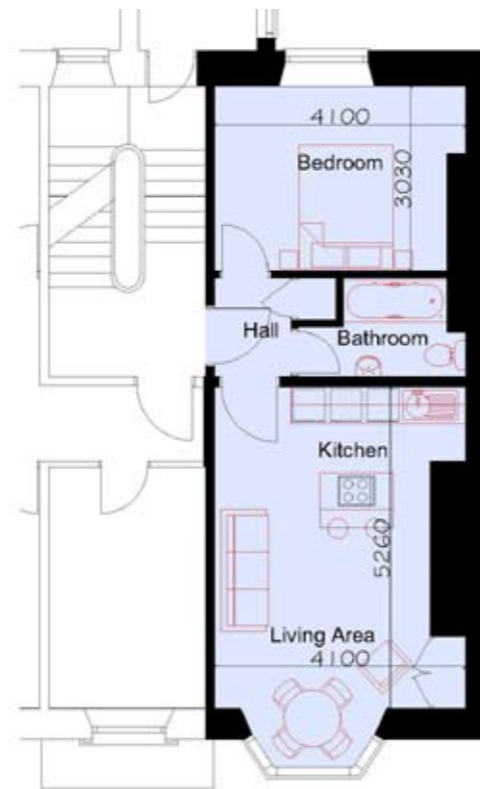
Type 1



Type 2



Type 3



Type 4

- High quality contemporary German kitchens
- Stainless steel oven and ceramic hob
- Integrated fridge/freezer and dishwasher
- White bathroom suites with Grohe showers
- Porcelain floor and wall tiles in the bathroom
- Dalsouple flooring in kitchen area
- Door entry phone
- Fitted carpets
- Efficient electric heating
- Sky satellite aerial system
- Feature fireplace
- Communal landscaped courtyard

